

NOMASTYL® PURE

Installation instructions



Architecture & Design



NOMASTYL® PURE

THE NOMASTYL® PURE RANGE INCLUDES FOUR MODELS

The models NE1, NE2 and NE4 follow the shape of a perfect circular arc. In the case of NE3, the form is slightly flattened.



NOMASTYL® PURE NE1

H 40 mm
W 40 mm
L 2 m



220 m

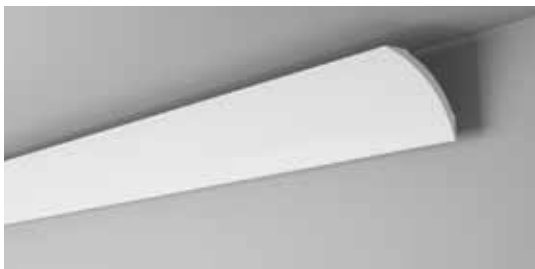


NOMASTYL® PURE NE2

H 60 mm
W 60 mm
L 2 m



120 m

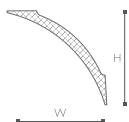


NOMASTYL® PURE NE3

H 82 mm
W 82 mm
L 2 m



70 m

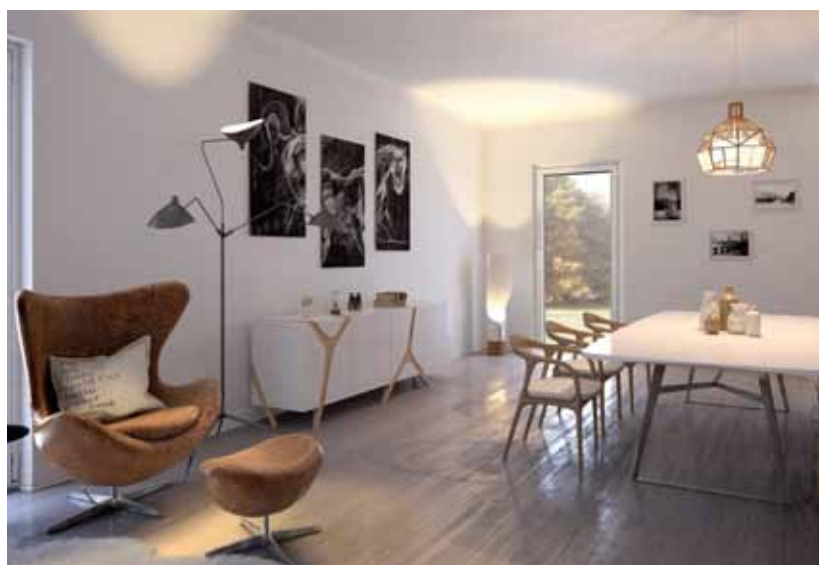
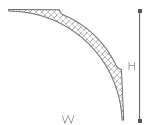


NOMASTYL® PURE NE4

H 100 mm
W 100 mm
L 2 m



110 m



INSTALLATION INSTRUCTIONS



MATERIAL FOR PROCESSING

- Chalk line dyer
- Ruler
- Pencil
- Spatula
- Venetian trowel
- Cartridge gun
- As appropriate, mixing vessel and water
- Cutter knife, sponge, cloth, duster
- Sandpaper (150 or finer)
- VARIO mitre box, VARIO PLUS or mitre saw
- Protractor
- PS saw for NOMASTYL® Profiles
- ADEFIX® adhesive
- Filler



Mark out the profile height.



Draw on fitting line (chalk line, laser).



CUT THE PROFILE TO SIZE

Place profile in mitre box (the floor of the mitre box represents the ceiling, the movable wall with the slide gates (holders) the wall, and the lower edge of the profile is pressed under the slide gates).

Saw the profile with the PS saw on a mitre to the correct angle.



Alternatively, saw using a mitre saw with the appropriate blade.



Slightly roughen the cut edges and butt joint edges on the profile with fine sandpaper (150 grain or finer) or cutter knife and remove sawdust using a damp sponge.



FIT THE PROFILE

Apply the ADEFIX® adhesive from the cartridge gun in a continuous bead to both adhesive surfaces of the profile.



Fit the profile immediately, pressing down gently with your hand (try to avoid leaving any fingerprints).



Then apply ADEFIX® to the butt and mitre joints, to a thickness of 2-3 mm.

If necessary, wipe off the adhesive with a damp sponge.

Backfill these joints with ADEFIX®.

After drying (approx. 2-8 hours), gently rub down the butt joints (sandpaper 150 grain or finer).

Backfill the ceiling and wall joints and the mitres with ADEFIX® adhesive.



FILL THE PROFILE

Mix the filler.

Fill the edges of the profile correctly with the Venetian trowel, making sure that the profile is not damaged.

After drying, carefully smooth off with fine sandpaper (150 grain or finer). Add more layers of filler if necessary.

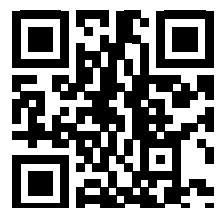
Add top coat after drying.

OPTION

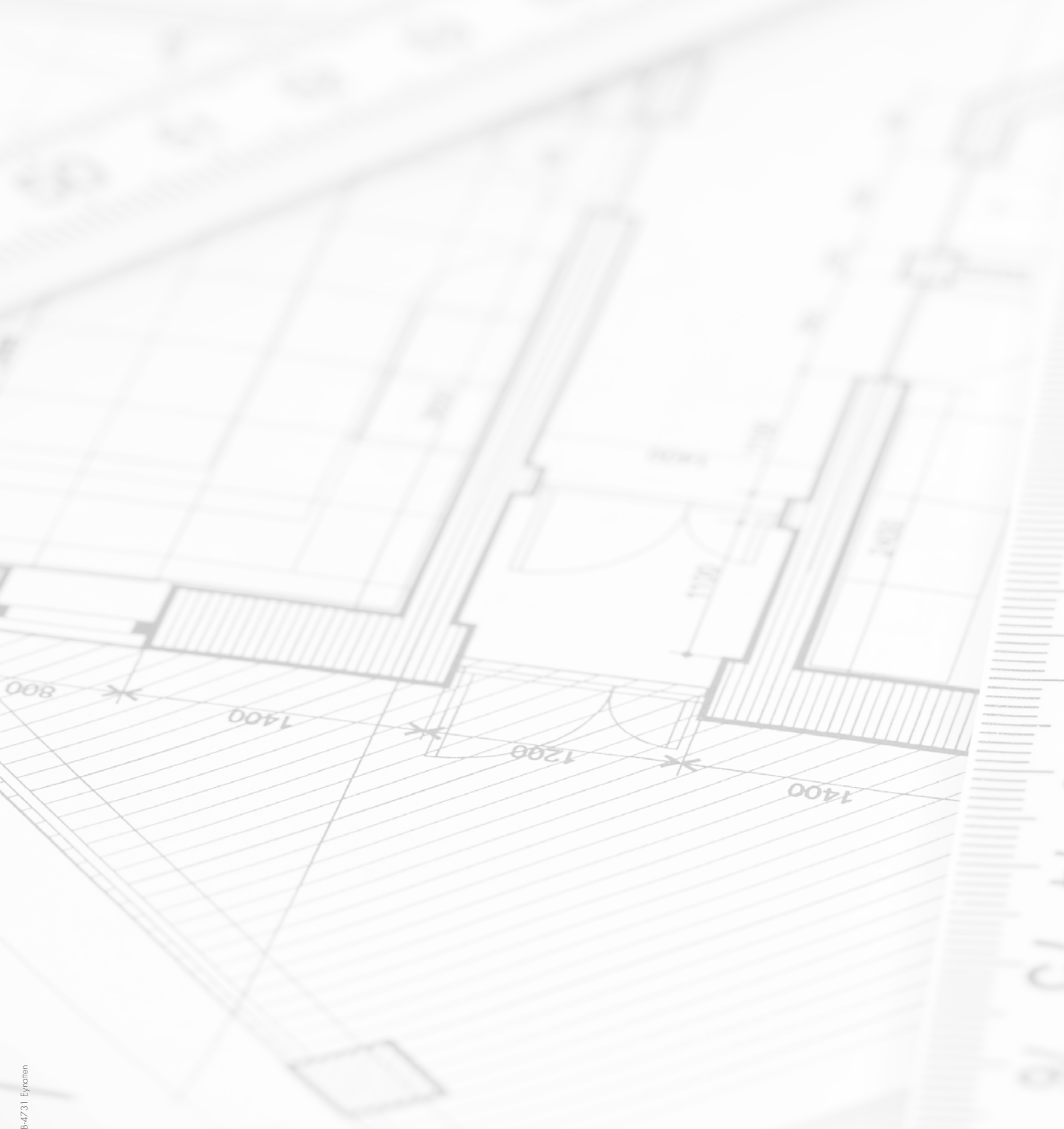
Coat the wall, ceiling surface and profile with a fleece. A dispersion adhesive must be used around the profile.

Profiles can also be used for purely decorative effect without skim coating.

INSTALLATION VIDEO







NMC-Copley

Bridge road - Brompton on Swale - Richmond - N.Yorks - DL10 7HS

☎ +44 01969 623410 - 📠 +44 01969 624398

sales@nmc-copley.co.uk

www.copleydecor.co.uk

nmcdecoration.com

NMC sa

Gert-Noël-Strasse - B-4731 Eynatten

☎ +32 87 85 85 00 - 📠 +32 87 85 85 11

info@nmc.eu

